

Regional Adaptation for Climate Resilience of Monterey Bay Coastal Communities

Wildfire Risk Reduction through Eucalyptus Treatment, Prescribed Fire, and Cultural Burning Expansion

ADAPTATION STRATEGY 4

Wildfire Risk Reduction: Fuels Management, Prescribed & Cultural Burning

Projects Administered by the Resource Conservation District of Monterey County



CMSF CALIFORNIA
MARINE
SANCTUARY
FOUNDATION

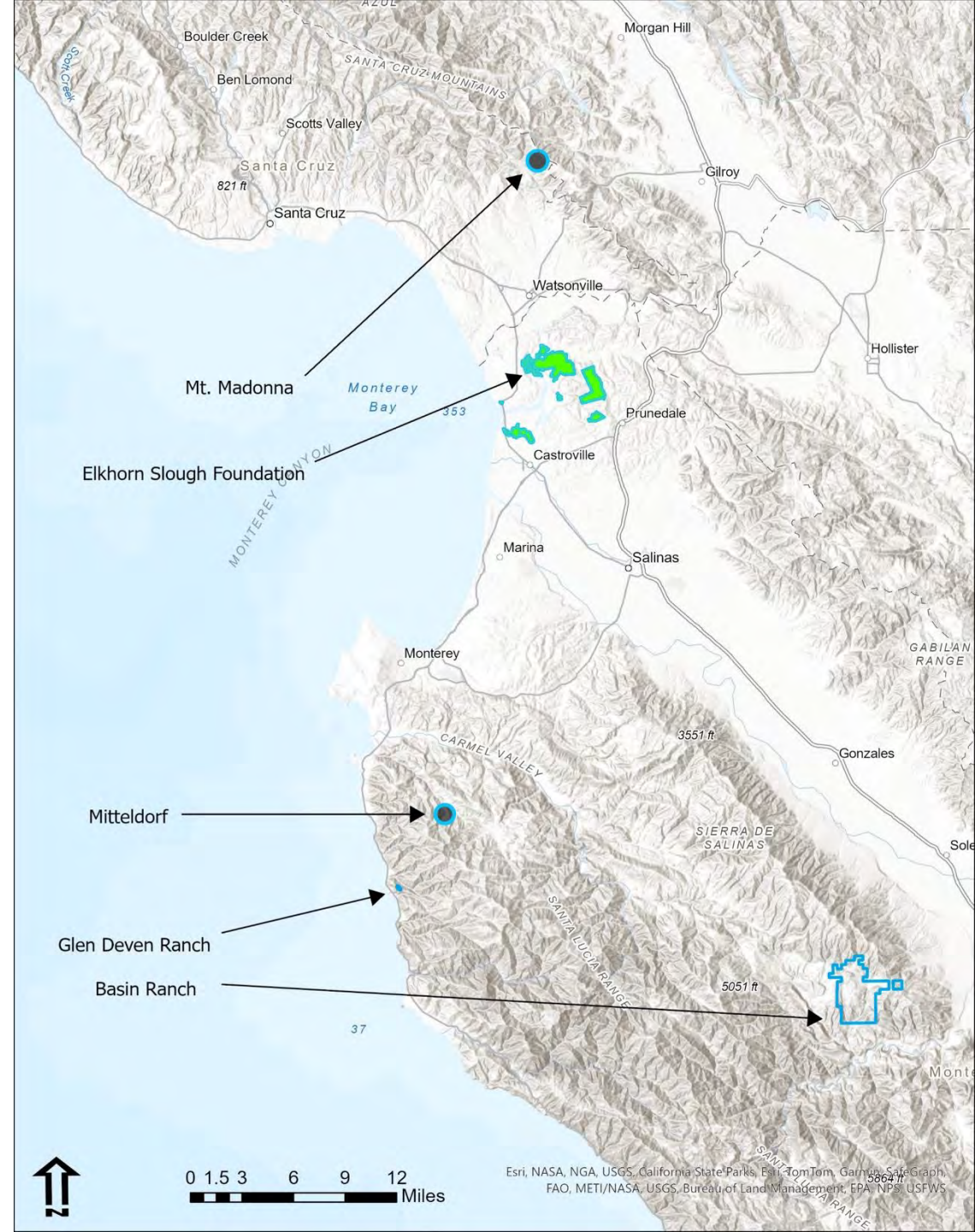


Wildfire Risk Reduction through Eucalyptus Treatment, Prescribed Fire, and Cultural Burning Expansion

- Partners:
 - **Big Sur Land Trust-** Glen Deven Ranch, Basin Ranch, Mitteldorf
 - **Esselen Tribe of Monterey County-** Basin Ranch
 - **Central Coast Prescribed Burn Association-** Glen Deven Ranch, Basin Ranch, Mt. Madonna, Mitteldorf
 - **Elkhorn Slough Foundation-** North Monterey County Eucalyptus Treatment
- BSLT and ETMC are partners co-managing the Basin Ranch project



Project Locations Map



Resource Conservation District of Monterey County

- The mission of the RCD is to conserve and improve our natural resources, integrating the public interest in environmental protection with the needs of agricultural and urban users.
- RCDMC has been involved in forest health and wildfire prevention work since 2018
- We work with a large group of partners across Monterey County with planning, environmental compliance, technical assistance, implementation and monitoring of resource work
- Helping with environmental compliance, grant administration, reporting and communications between partners, CMSF and NOAA



4.2- North Monterey County Eucalyptus Treatment and Wildfire Prevention

- **Elkhorn Slough Foundation**
- Project Focus: Removal of invasive blue gum eucalyptus (*Eucalyptus globulus*) in WUI areas near Elkhorn Slough; create new forest management plan
- Where: Elkhorn Slough Foundation property near Hall Road
- Why: blue gum eucalyptus are non-native and invasive, form dense monotypic stands that severely limits native plant growth and increase wildfire risk from their inherent biology

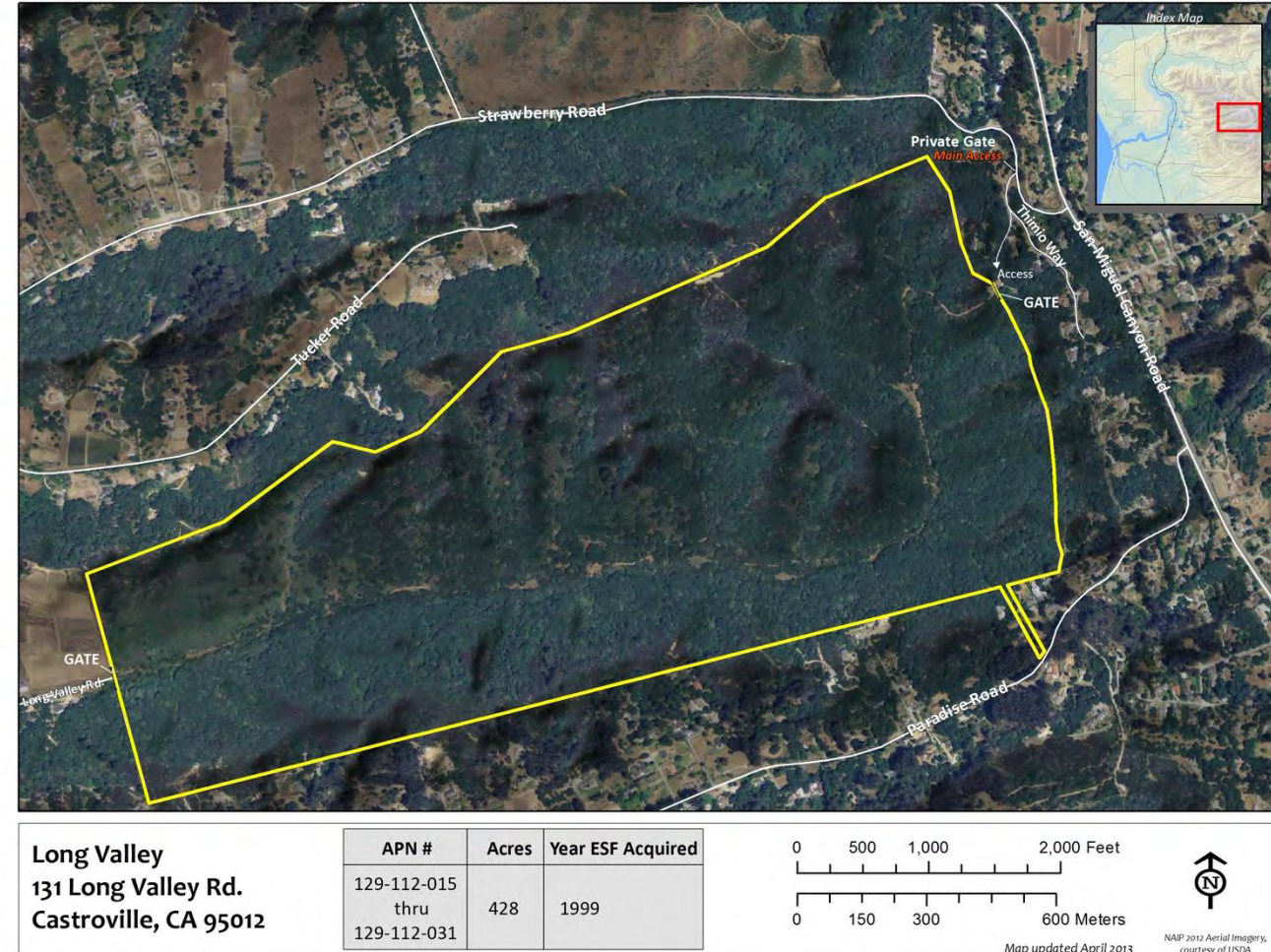
North Monterey County Eucalyptus Treatment and Wildfire Prevention

- Objectives

- Treatment of approximately 40 acres of blue gum eucalyptus on ESF Northern Crescent property near Las Lomas
- Post-treatment conversion of biomass into biochar
- Creation of a Forest Management Plan for the ESF Long Valley property to enable future forest health and wildfire resiliency treatments

- Context

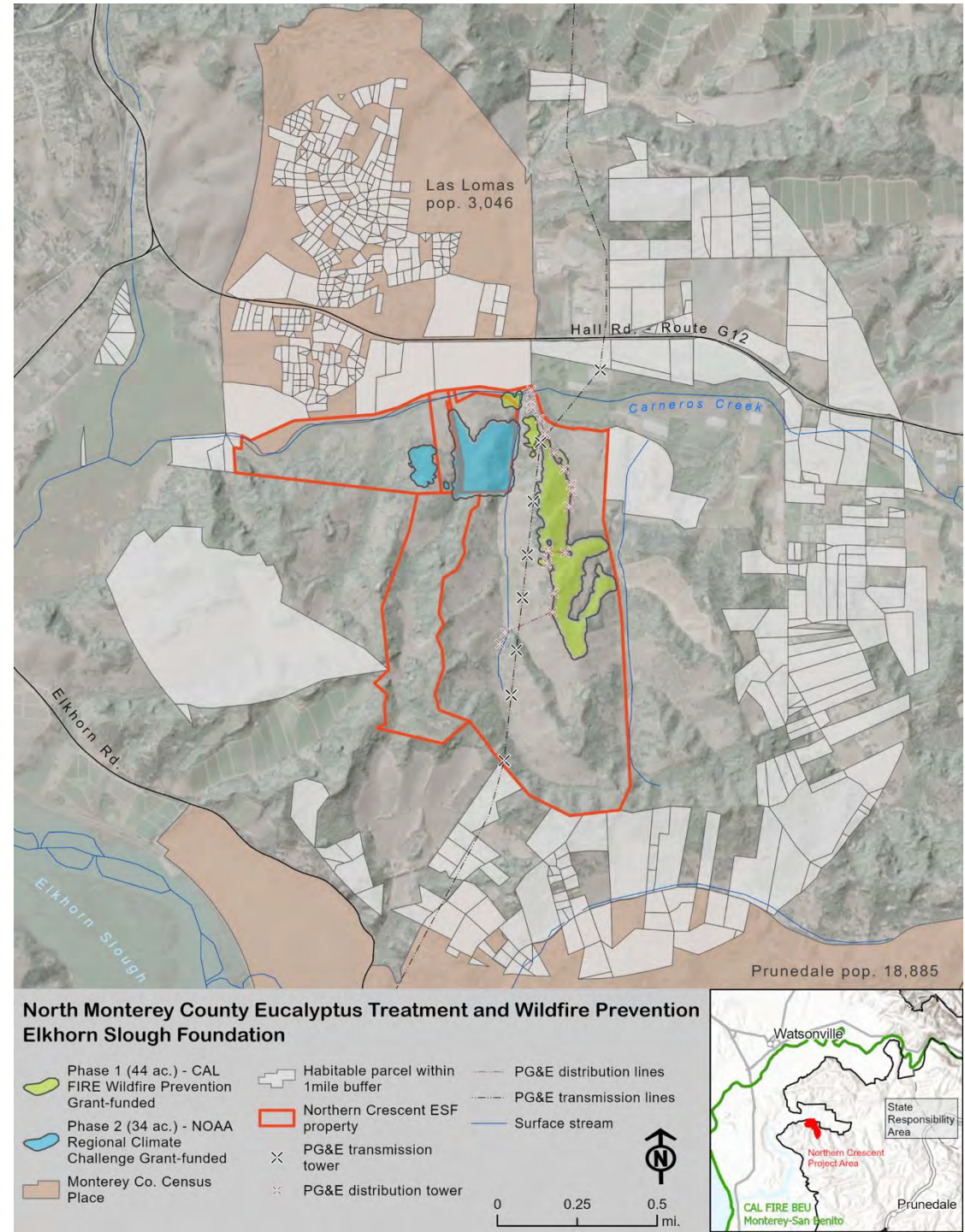
- Builds on past and current management strategies of treating eucalyptus on ESF properties
- Reduces the impact of an aggressive, non-native species on a critical wetland system (the Elkhorn Slough) and impacts to surrounding communities



North Monterey County Eucalyptus Treatment and Wildfire Prevention Map

Goals: The resulting landscape will have lighter fuel loads, reduced crown fire potential, better roads for emergency vehicle access, and improved coast live oak forest health.

The project will help protect over 700 adjacent habitable structures, electrical and telecommunications infrastructure, schools, and other community institutions



4.3 - Monterey Bay Prescribed Fire and Cultural Burning Expansion

Projects

- Mt. Madonna: owned and managed by Mt. Madonna Center
 - Location: Near Mt. Madonna summit, Santa Cruz Mountains, Santa Clara/Santa Cruz Counties
- Glen Deven Ranch: owned and managed by Big Sur Land Trust (BSLT)
 - Location: Palo Colorado Canyon, Santa Lucia Mountains, Monterey County
- Basin Ranch: owned by BSLT; co-managed with the Esselen Tribe of Monterey County
 - Location: Carmel Valley/Arroyo Seco, Sierra de Salinas Range, Monterey County
- Mitteldorf: owned and managed by BSLT
 - Location: Carmel Valley, within Santa Lucia Preserve, Monterey County

Monterey Bay Prescribed Fire and Cultural Burning Expansion

- Central Coast Prescribed Burn Association (CCPBA) will provide assistance with Glen Deven Ranch, Mt. Madonna, Mitteldorf and Basin Ranch
- All four projects will involve burn planning, coordination between relevant partners, burn unit preparation, implementation and monitoring
- Timelines for the four projects will be staggered slightly but with room to allow for burn windows; all will depend on the right conditions for burning to be able to implement

Glen Deven Ranch Project Map

- Objective
 - To use prescribed fire to treat invasive French broom (*Genista monspessulana*)
- Goals
 - Reduce wildfire risk posed by French broom to GDR and surrounding community
 - Increase native biodiversity
 - Increase forage for GDR cattle



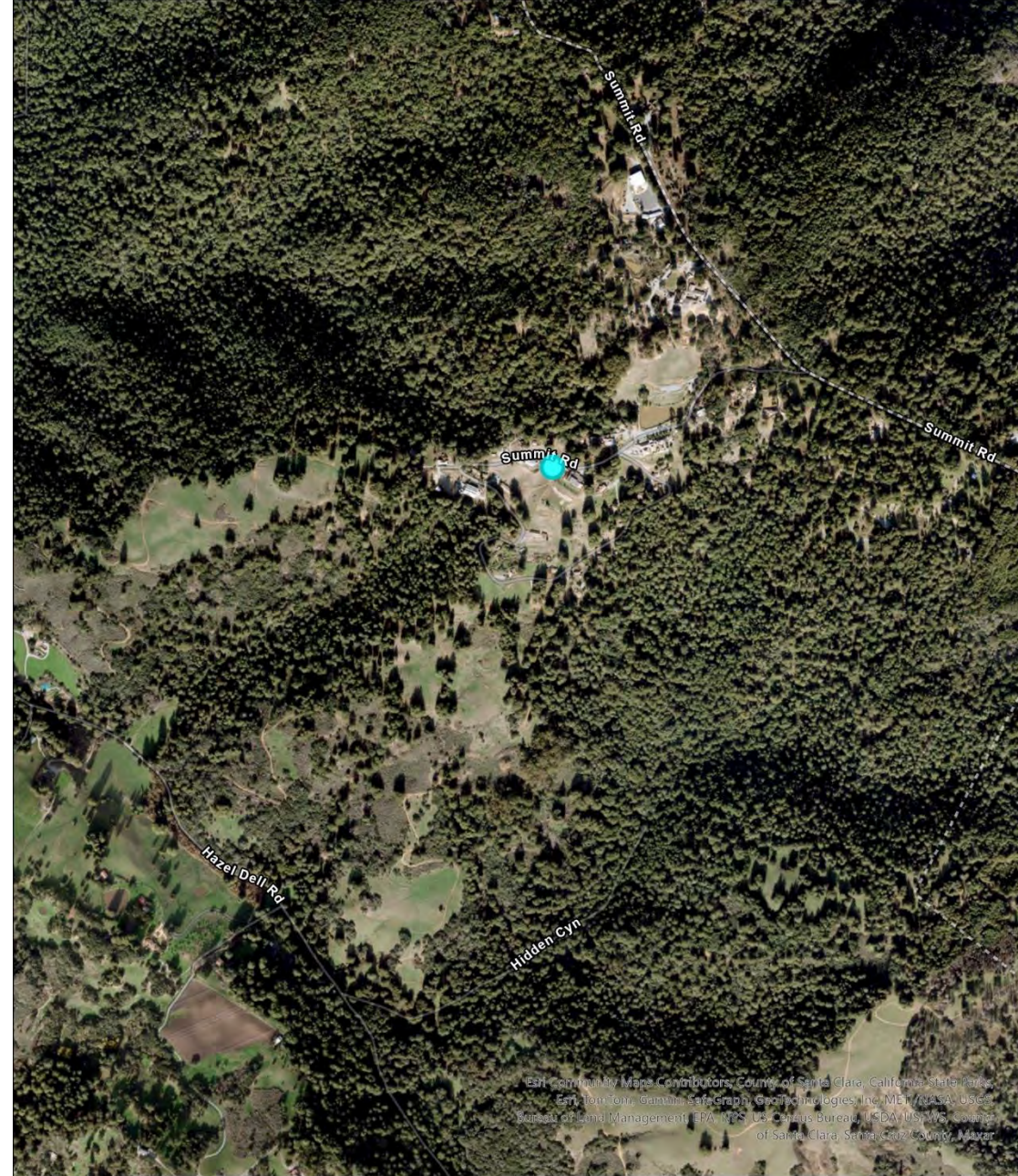
0 0.050.1 0.2 0.3 0.4
Miles

Big Sur Land Trust- Glen Deven Ranch



Mt. Madonna Project Map

- Objective
 - Prescribed burning of fifteen acres of coastal redwood habitat
- Goals
 - Improve coastal redwood habitat and increase fire resiliency
 - Provide wildfire risk reduction for the Mt. Madonna Center and neighboring communities



ESRI Community Maps Contributors, County of Santa Clara, California State Parks, Esri, TomTom, Garmin, SafeGraph, Geotitles, Inc, METI/ASA, USGS, Bureau of Land Management, EPA, NPS, US Census Bureau, USDA, USFWS, County of Santa Clara, Santa Clara County, Mayor

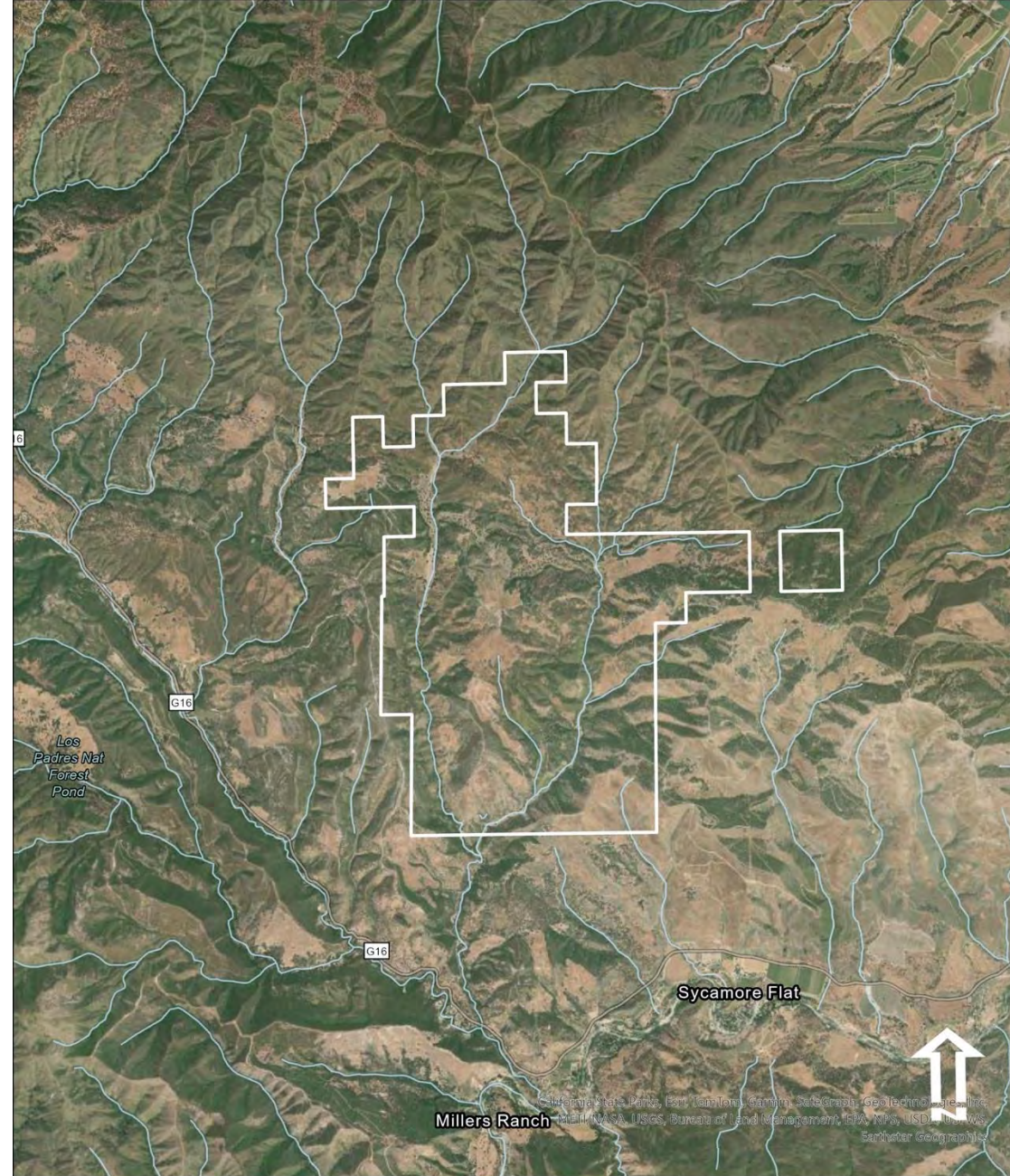
0 0.050.1 0.2 0.3 0.4 Miles

Mt. Madonna Center
Project Area Map



Basin Ranch Project Map

- Objectives:
 - To use prescribed and cultural burning to achieve multiple resource objectives; ~ 100 acres
 - Repair road access
 - Increase Esselen Tribe of Monterey County cultural management of lands
- Goals:
 - Increase fire resiliency of property
 - Increase native biodiversity
 - Providing opportunities for cultural management at larger scales



0 0.250.5 1 1.5 2 Miles

Big Sur Land Trust/Esselen Tribe of Monterey County

Basin Ranch Property Boundary Map



Mitteldorf

- Objective:
 - Use prescribed burning in combination with other forest management treatments in coastal redwood habitat
- Goals:
 - Maintain and enhance wildfire resiliency
 - Improve coastal redwood habitat
 - Reduce SOD vectors

Central Coast Prescribed Burn Association (CCPBA)

- Covers the San Benito/Santa Cruz/Monterey County areas
- Provide burn planning, prescribed fire training, technical assistance for prescribed fire, implementation and monitoring of planned burns
- CCPBA core : Jared Childress, CCPBA Program Manager; Spencer Klinefelter, CCPBA Program Assistant; and Alex Michel, CCPBA Prescribed Burn Organizer
- Provide a critical nexus for prescribed burning in a three-county area
- Hundreds of CCPBA members
- Dozens of successful trainings
- Several successful burns implemented
- Planned and successfully held first Central Coast TRES in 2023; first Forester TRES in June 2024

CCPBA – 2023 Central Coast TRES



Photos by CCPBA- 2023 CCTREX from Nyland
Ranch

Project Timelines

North Monterey County Eucalyptus Treatment and Wildfire Prevention Project

ESF Activity	2025	2026	2027	2028	2029
Project Admin	Light Gray	Blue	Blue	Blue	Blue
Eucalyptus Removal	Light Gray	Blue	Blue	Blue	Blue
Stump Treatments	Light Gray	Blue	Blue	Blue	Blue
Biochar Creation	Light Gray	Light Gray	Light Gray	Blue	Light Gray
Long Valley FMP	Light Gray	Light Gray	Light Gray	Blue	Blue

Rx Fire Projects	2025	2026	2027	2028	2029
Glen Deven					
Planning					
Permitting/Prep					
Implementation					
Post-fire monitoring					
Mt. Madonna					
Planning					
Permitting/Prep					
Implementation					
Post-fire monitoring					
Basin Ranch					
Planning					
Permitting/Prep					
Implementation					
Post-fire monitoring					
Mitteldorf- TBD					

RCDMC Staff working on Wildfire Risk Reduction through Eucalyptus Treatment, Prescribed Fire, and Cultural Burning Expansion Project

Executive Director- Paul Robins

Forest Health and Wildfire Resilience Program Manager- Jamie Tuitele-Lewis

Environmental Scientist- Megan Barker

Finance Manager- Maggie Errea

Field Manager- Jasmine Ruvalcaba

Programs Assistant- Audrey Garcia

Thank you!